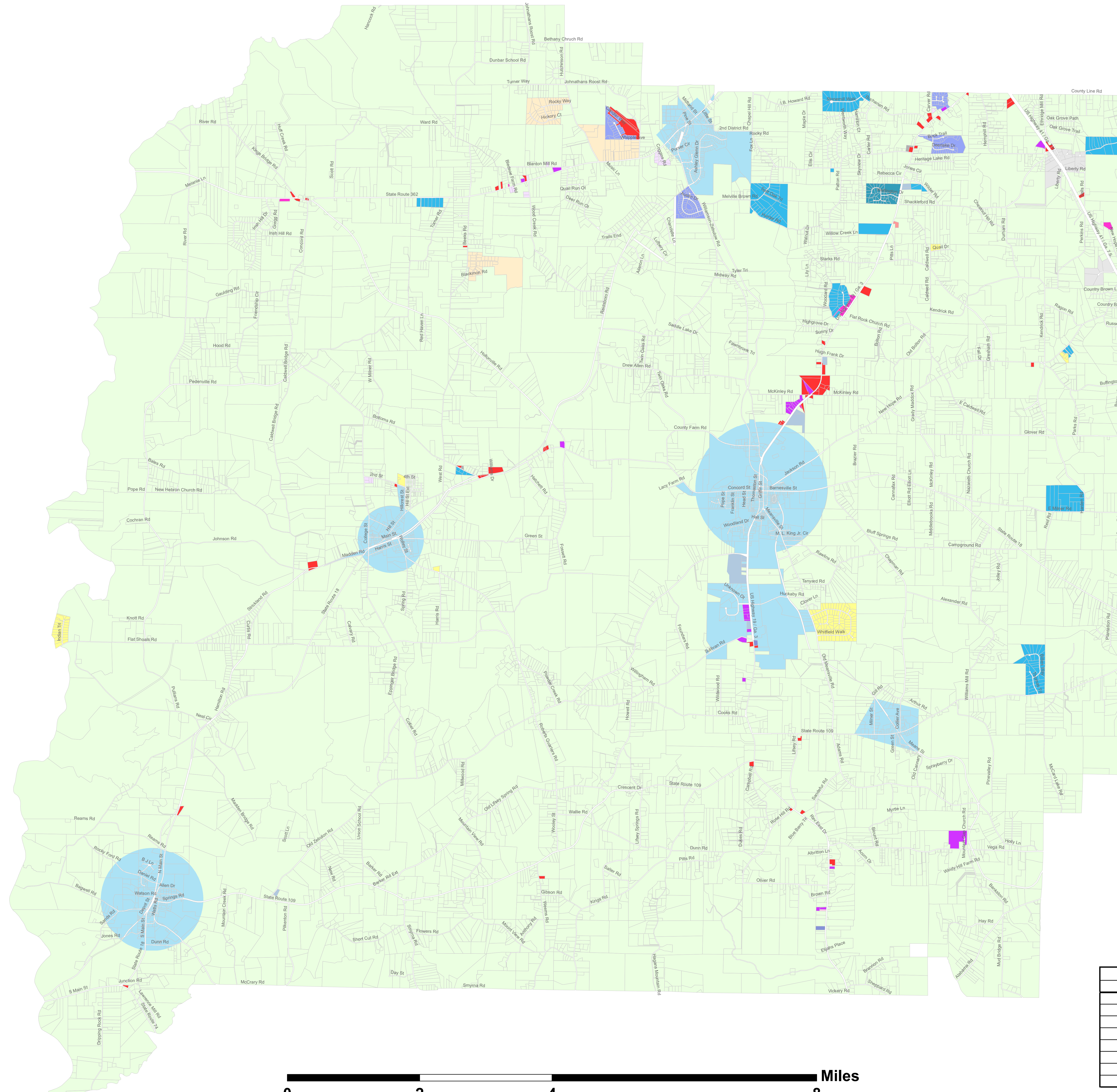


- ZONING**
- AR
  - C1
  - C2
  - C3
  - DR6 (REPEALED)
  - M1
  - M1A
  - M2
  - M2B
  - PI
  - PM
  - PR (REPEALED)
  - PRD
  - R6 (REPEALED)
  - R11
  - R15
  - R20
  - CONCORD
  - MEANSVILLE
  - MOLENA
  - WILLIAMSON
  - ZEBULON



REVISIONS		
No.	Reference	Date
1	Necessary Corrections / Revisions; Repeal of R-6 Zoning	06-09-10
2	Necessary Corrections	10-13-10
3	Revisions Per County Initiated Rezoning	03-14-12
4	Annual Update	04-10-13
5	Annual Update	03-12-14
6	2014 Zoning Map Amendments	04-08-15
7	2015 Zoning Map Amendments	03-29-16
8	2016 - 2020 Zoning Map Amendments	11-30-21

# PIKE COUNTY ZONING MAP

## Official Zoning Map for Pike County, Georgia

Chairperson, Pike County Board of Commissioners \_\_\_\_\_ Date \_\_\_\_\_

Coordinate System:  
 NAD 1983 State Plane Georgia West FIPS 1002 Feet  
 Projection: Transverse Mercator  
 Datum: North America 1983

While Pike County makes every effort to maintain and distribute accurate information, no warranties and/or representations of any kind are made regarding the information or data provided on this map. In no event shall Pike County be held liable for the improper use of this map or data.  
 This map is dynamic and in a continuing state of review and upgrade.

Produced in November 2021 by Paragon Consulting Group (PCG). All information portrayed in this product is for reference use only. Therefore, PCG will not be held liable for improper use of the data provided herein. The data and related graphics are not legal documents and should not be utilized in such a manner. The information contained herein is considered dynamic and will change over time. It is the responsibility of the user to use the products appropriately.

Published Date: 11/30/2021